

- **Light protection for non-toxic workplace**

PPSB fabric is strong, durable and comfortable.

- **CE Category I protective garment**

- **More fit your body shape**

Fully elasticated hood, ankles, wrists, and waist make you more comfort and protected.

- **Application**

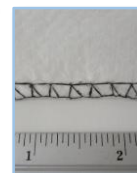
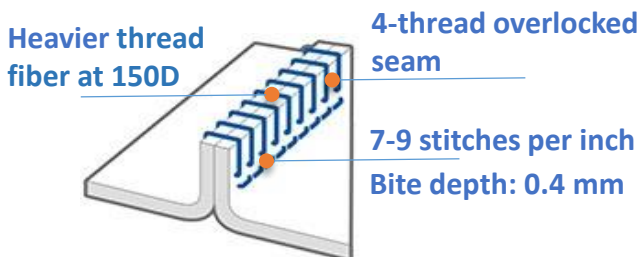
Civil protection, construction, decorative work, food processing & packing, medical, emergency.



CE Certification

- PPE Directive (89/686/EEC) Category I
- Do not use for:
 1. Contact with heavy oils, sparks or flames, or combustible liquids.
 2. Exposure situations resulting in spray or liquid buildup on the suit.
 3. Environments with high mechanical risks (abrasions, tears, cuts).
 4. Environments with conditions of excessive heat.

Seam Technology



Competitor 1:
Only 4-5 stitches per inch.

Competitor 2:
Only 3 thread seam with narrow bite depth.

Optimal Design

Fit on body ergonomically

3-piece hood and zipper fasten the edge of chin, The elastic perfectly embracing face curve and head shape can reduce the risk of exposure and seal fit the respirator and goggles.

Fully elasticated waist and Elasticated wrists and ankles which are suitable for body shape. It's making work more convenient and avoiding particulates getting into clothing.

Freedom of movement

Ample crotch giving more space and sharing the pressure while squatting or crawling; so, can avoid pulling rupture and burst.

Sealed fit & safety

From the shoulder, sleeve to legs, the outline of body shape is no sewing which is to reduce the risk of contamination invasion.

Latex Free! The non-latex rubbers are sewed outside of cuff to reduce allergy attacks.

