

- **Treated flame retardant protective clothing**

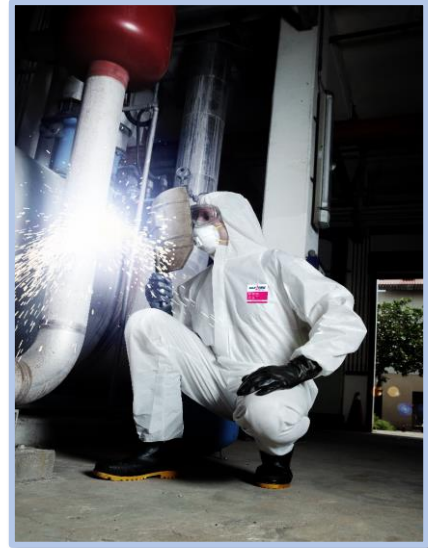
Keep workers safe from flame light spray risk of workplace.

- **Protection for flame resistant garment**

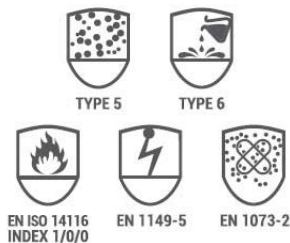
Prolongs the using duration and saves laundry cost.

- **Multi layers SMMS fabric is not only strength and durable, but soft and breathable**

Wearing outside of flame resistant garment is more comfortable.



CE Certification



- Type 5 against dry particle garment.
- Type 6 against light spray liquid garment.
- EN1149-5 antistatic property.
- EN1073-2 against radioactive particulate contamination.
- EN ISO 14116 Index 1/0/0 against occasional and brief contact with sparks and small flames.

Performance of ULTITEC 1000FR

| WHOLE SUIT TEST PERFORMANCE | | RESULT |
|---|-------------------------|---------------------|
| Type 5 | EN ISO 13982-2:2004 | Pass |
| Type 6 | EN13034+A1:2009 + EN468 | Pass |
| Protective clothing against radioactive contamination | EN1073-2: 2002 | Class 1 |
| Antistaticity | EN1149 - 5 | Pass |
| Limited Flame Spread | EN ISO 14116 | Pass Index 1/0/0 |

Performance of ULTITEC 1000FR

| FABRIC CHEMICAL PROPERTIES | PENETRATION | REPELLENCY |
|---|-------------|------------|
| Resistance to chemical penetration EN 6530 | | |
| Sulphuric acid 30% | 3 | 3 |
| Sodium Hydroxide 10% | 3 | 3 |

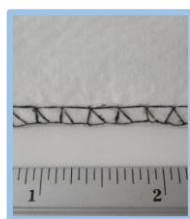
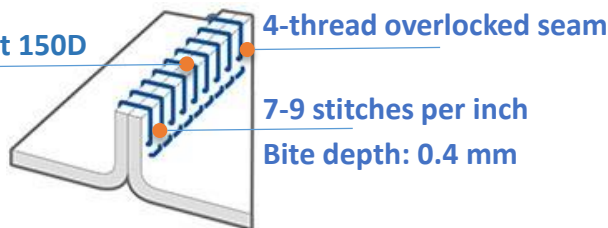
| FABRIC PHYSICAL PROPERTIES | TEST METHOD | CLASS |
|---|-------------|-------|
| Classifications in accordance with EN 14325:2004 | | |
| Abrasion Resistance | EN 530 | 1 |
| Flex Cracking Resistance | ISO 7854 B | 4 |
| Trapezoidal Tear Resist. | ISO 9073-4 | 2 |
| Tensile Strength | ISO 13934-1 | 1 |
| Puncture resistance | EN 863 | 1 |
| Seam Strength | ISO 13935-2 | 3 |
| pH values | EN ISO 3071 | Pass |

Notes:

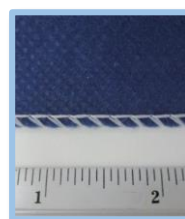
1. According to EN ISO14116 Index 1, the limited flame spread coverall must never be in direct contact with skin. ULTITEC 1000FR must be always worn on top of index 2 or 3 garments and hoods.
2. The seams, elastics and zipper components are not made of flame retardant materials and may burn if exposed to heat and flame.

Seam Technology

Heavier thread fiber at 150D



Competitor 1:
Only 4-5 stitches per inch.



Competitor 2:
Only 3 thread seam with narrow bite depth.

Optimal Design

Fit on body ergonomically

3-piece hood and zipper fasten the edge of chin, The elastic perfectly embracing face curve and head shape can reduce the risk of exposure and seal fit the respirator and goggles.

Fully elasticated waist and Elasticated wrists and ankles which are suitable for body shape. It's making work more convenient and avoiding particulates getting into clothing.

Freedom of movement

Ample crotch giving more space and sharing the pressure while squatting or crawling; so, can avoid pulling rupture and burst.

Sealed fit & safety

From the shoulder, sleeve to legs, the outline of body shape is no sewing which is to reduce the risk of contamination invasion.

Latex Free! The non-latex rubbers are sewed outside of cuff to reduce allergy attacks.

